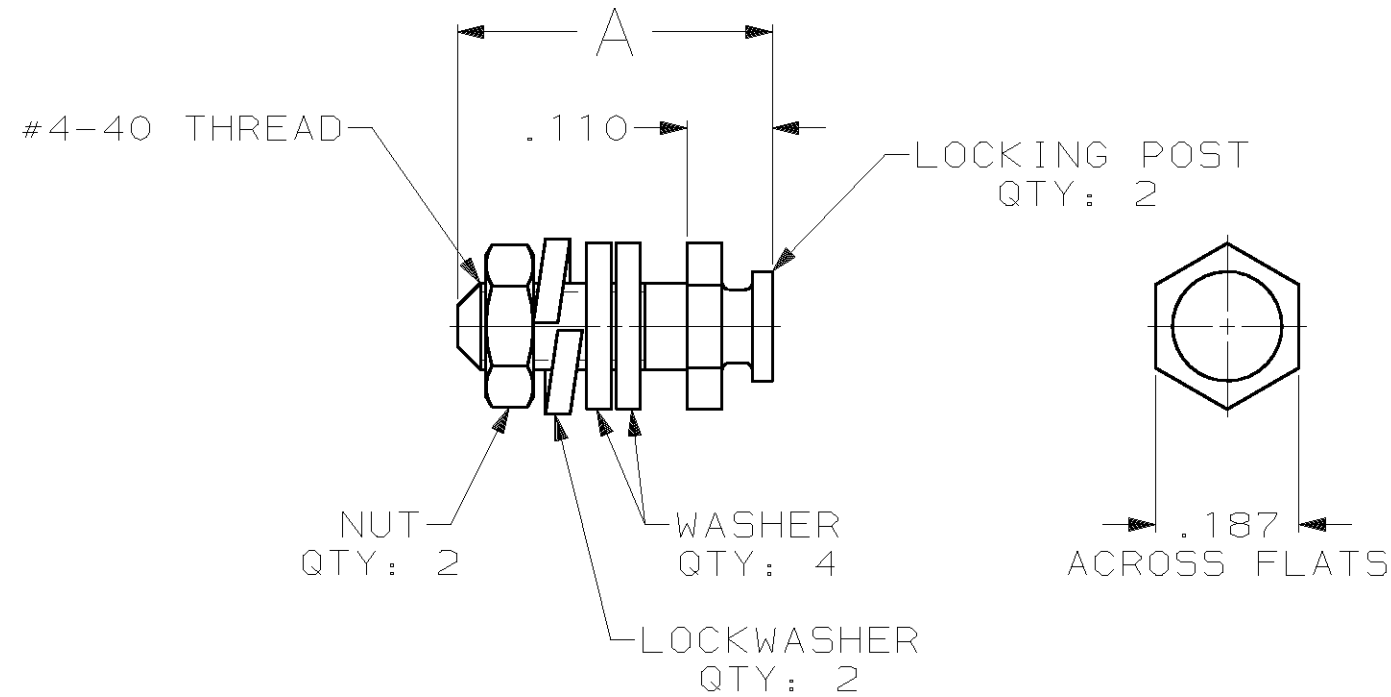


THIS DRAWING IS UNPUBLISHED. RELEASED FOR PUBLICATION, 19 .
 © COPYRIGHT 19 BY AMP INCORPORATED. ALL INTERNATIONAL RIGHTS RESERVED.

| LOC | DIST | P | F | ZONE | LTR | DESCRIPTION | DATE | APPD |
|-----|------|---|---|------|-----|----------------------|-----------|------|
| GP | 00 | | | | C | REV PER OUID-0274-00 | 22 OCT 01 | JR |



- 1 ZINC PLATED PER ASTM B633, TYPE II, CLASS SC1, YELLOW CHROMATE.
- 2 ZINC PLATED PER ASTM B633, TYPE III, CLASS SC1, CLEAR CHROMATE.
- 3. PARTS PACKAGED UNASSEMBLED.
- 4 PARTS PACKAGED AS A UNIT KIT.
- 5 PARTS INDIVIDUALLY BULK PACKAGED & SHIPPED AS A UNIT PACKAGE.

SUPERSEDED BY 206514-4

| | | | |
|---|---|------|----------|
| 5 | 1 | .560 | 206514-7 |
| 4 | 1 | .560 | 206514-6 |
| 5 | 2 | .410 | 206514-5 |
| 4 | 2 | .410 | 206514-4 |
| 5 | 1 | .410 | 206514-3 |
| 4 | 1 | .410 | 206514-1 |

| | | | | |
|---|--|-----------------------|---|------------------|
| DO NOT SCALE PRINT. UNLESS SPECIFIED DIMENSIONS IN INCHES TOLERANCES ON: 2 PLC DEC ± - 3 PLC DEC ± .015 ANGLES ± - | | DR - | AMP INCORPORATED Harrisburg, Pa. 17105 | |
| MATERIAL COLD ROLLED STEEL PER ASTM A108 | | CHK - | | |
| FINISH SEE TABLE | | APPD - | NAME LOCKING POST KIT, AMPLIMITE ® | |
| | | APPD - | | |
| | | PRODUCT SPEC - | SIZE B | FSCM NO 00779 |
| | | APPLICATION SPEC - | DRAWING NO 206514 | |
| | | WEIGHT - | SCALE 4:1 | SHEET 1 OF 1 |