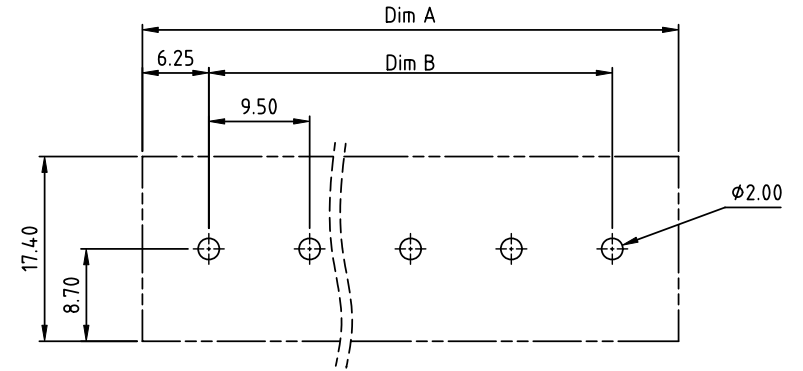
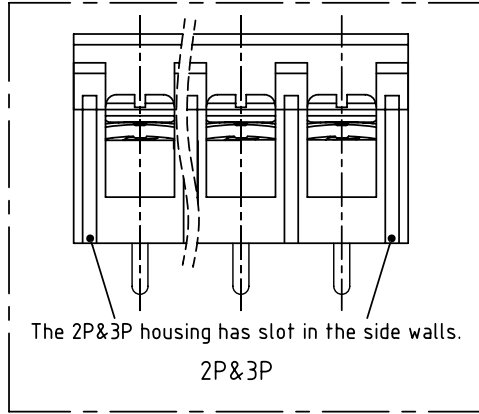
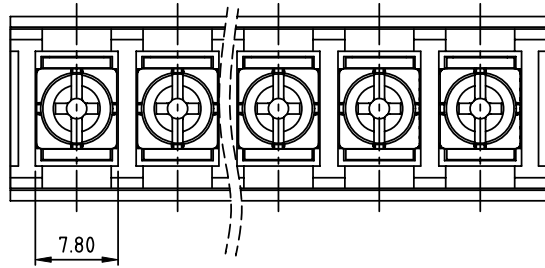
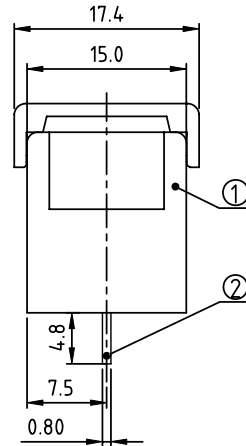
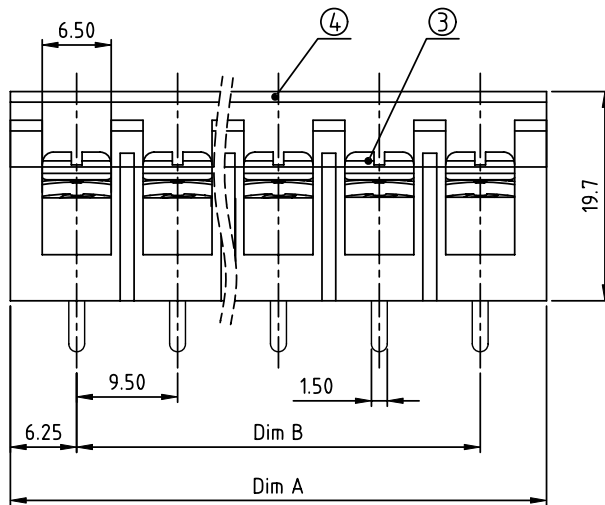


PRODUCT NUMBER	PITCH
YK501xx2x0J0G	9.50 mm



RECOMMENDED P.C.B LAYOUT
TOP VIEW



- MATERIALS & ELECTRICAL**
- | | |
|-----------------------------|--------------------------------|
| RATED VOLTAGE & CURRENT: | 300 V, 20 A |
| WITHSTAND VOLTAGE: | AC 2000 V/Min |
| INSULATION RESISTANCE: | 1000 MΩ OR MORE AT DC 500 V |
| OPERATING TEMPERATURE RANG: | -40 °C ~ +115 °C |
| SCREW TORQUE VALUE: | 12 Lb-in. |
| WIRE RANGE: | 22 - 12AWG |
| 1) HOUSING: | THERMOPLASTIC, UL 94 V-0 BLACK |
| 2) TERMINAL: | BRASS, 0.8t |
| 3) TERMINAL SCREWS: | STEEL, M3.5 |
| 4) COVER MATERIAL: | PC |
- APPROVAL: us

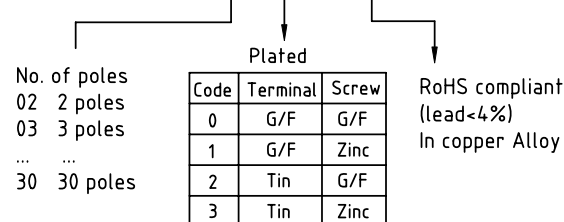
DIMENSION

Dim A	N×9.5+3.0
Dim B	(N-1)×9.5

N=Number of poles

Poles	Tolerance
2p-4p	±0.20
5p-10p	±0.30
11p-24p	±0.40
25p-30p	±0.60

PART NO.: YK 501xx 2 x 0 J0G



mat'l. code		surface ASME Y14.5	tolerance ASME Y14.5	projection	product family TERMINAL BLOCK
ltr	ecn no	dr	date	tolerances unless otherwise specified	title TERMINAL BLOCK
				angles 0° 15° 30° 45° 60° 75° 90° X*±1°	BARRIER TYPE, WITH COVER
				scale	MM
				dr	EVAN LU 061014
				enr	EVAN LU 061014
				chr	HANKE FENG 061014
				appd	SHI JUN 061014
sheet index	revision	A		FCI	dwg no YK501xx2x0J0G
	sheet	1			sheet 1 of 1
					type CUSTOMER Drawing