

OTHER MARKS, TRADE NAMES, REGISTERED

THIS DRAWING IS UNCLASSIFIED

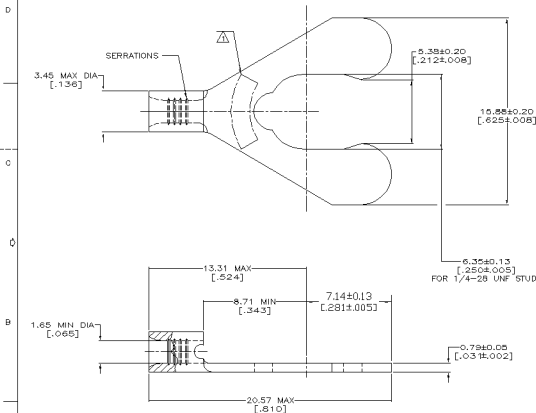
DATE 10/13/2011 BY SP4/SP6/1133/STP/1133/AB/66/6/122-1E

© COPYRIGHT 1988 BY AMP INCORPORATED. ALL INTERNATIONAL RIGHTS RESERVED.

REV	DATE	DESCRIPTION	DATE	APP'D
0	14	REVISED PER 0720-0230-93	2/20/88	g/204

METRIC

DIMENSIONS LISTED IN mm [INCHES]



AMP WIRE RANGE	E13200 Listed
22-16 AWG STRANDED	22-16 AWG STRANDED
LR7180 Certified	MILITARY P/N AND CLASS
NOT CERTIFIED	NOT APPLICABLE

⚠ STAMP 1/4S AMP 22-18* APPROX AS SHOWN
22-16 TERMINALS ARE STAMPED 22-18 IN ACCORDANCE WITH MILITARY SPECIFICATION ML-T-7928; COMMERCIAL WIRE RANGE IS 22-18 1/4S INDICATES STUD SIZE

**AMP INCORPORATED
CUSTOMER SERVICE SYSTEMS**

FOR ADDITIONAL
PRODUCT INFORMATION OR
COPIES OF DRAWINGS
AND TECHNICAL DOCUMENTS

PRODUCT INFORMATION CENTER
1-800-522-6752

FOR APPLICATION
TOOLING INFORMATION

TOOLING ASSISTANCE CENTER
1-800-722-1111

FOR ORDER ENTRY

1-800-526-5142

MAX RECOMMENDED OPERATING
TEMPERATURE:
170 C MAX

VOLTAGE RATING:
NOT APPLICABLE

WIRE CROSS SECTIONAL AREA RANGE:
0.26-1.60mm² [0.01-0.50] SQ MILS
STRANDED

DO NOT SCALE PRINT.
UNLESS SPECIFIED

TOLERANCES IN mm [INCHES]
FRACTIONAL DIM. ± .1
3 PL. DEC. ± .1
ANGLES -

MATERIAL:
TIN PLATE
0.0025 [E.0001] MIN
THK PER ML-1-10727

DR 2-11-83
SERIES

ENR 2-11-83
DA PATENTED
AMPD 2-11-83
SE WELDER

FRAGILE: BRASS PER ASTM B-103 ANNEALED
FINISH:
APPLICATION SPEC:

AMP AMP Incorporated
Harrisburg, PA 17105-3608

NAME: **TERMINAL, SHORT
SPRING SPADE, BUDGET**

SIZE: ONE CODE DRAWING NO:
SCALE: 2:1 00779 C-53235
SHEET 1 OF 1

16-888-94

1634-02

01/25/83

/Enr/Inf/1133/STP/1133/AB/66/6/122-1E

0

CUSTOMER DRAWING