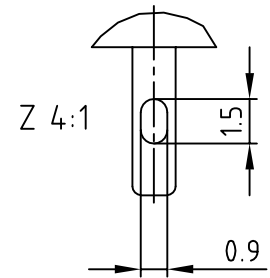
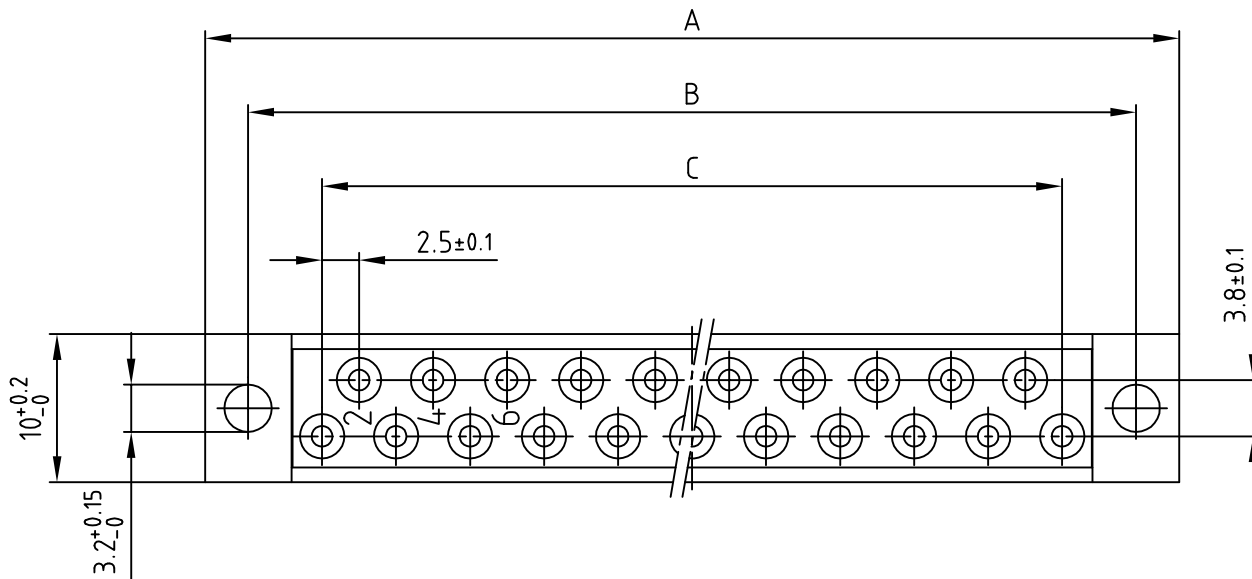
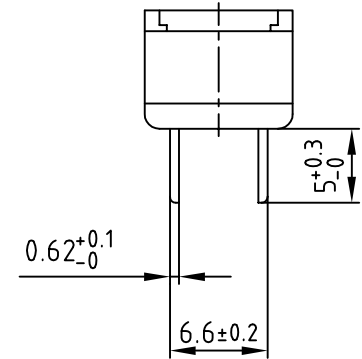
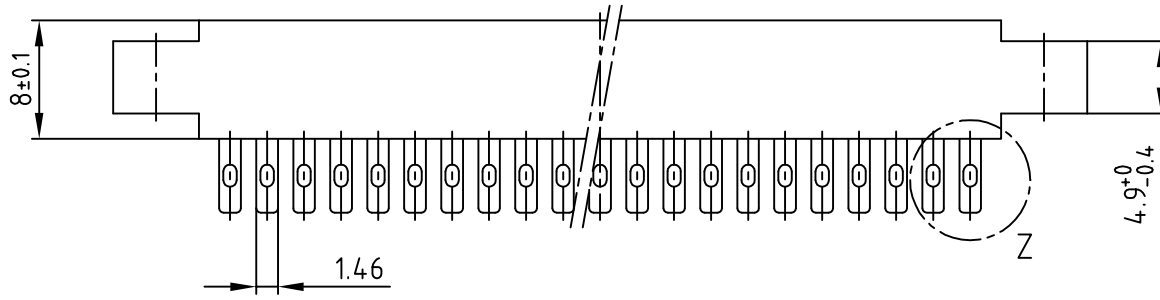


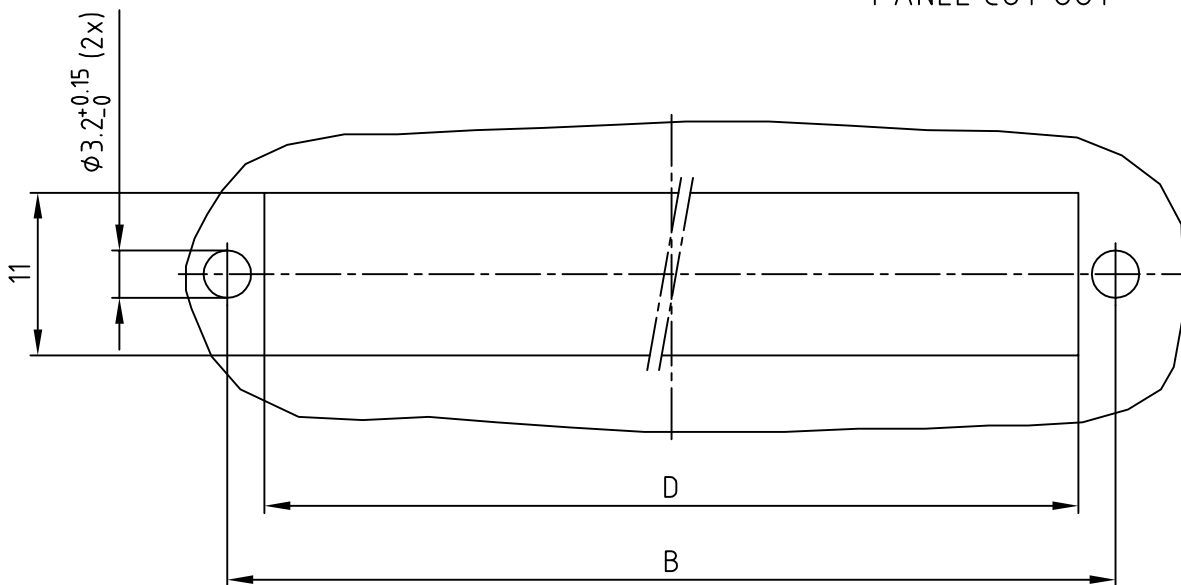
used for: DIN 41617

Part-No.	No. of pos.	A $-0.3$	B $\pm 0.1$	C $\pm 0.1$	D
102A10019X	13	45.8	40	12x2.5=30	35
102A10029X	21	65.8	60	20x2.5=50	55
102A10039X	31	90.8	85	30x2.5=75	80



Directive 2002/95/EC RoHS compliant

PANEL CUT OUT



ⓑ

NOTES:

- INSULATOR: PC GF UL 94 V-1, GREY
- CONTACTS: COPPER ALLOY  
PLATING: GOLD FLASH OVER NICKEL  
50 MATING CYCLES
- CONNECTOR IS PART MARKED: PART-NO. CONEC ABC

APPROVAL # FREIGABE # DEBLOCAGE # AUTOR/ZACION # APPROVAL	
CUSTOMER APPROVAL DATE:	
NAME:	TITLE:
COMPANY NAME:	
APPROVAL # FREIGABE # DEBLOCAGE # AUTOR/ZACION # APPROVAL	

THIS DRAWING MAY NOT BE COPIED OR REPRODUCED IN ANY WAY, AND MAY NOT BE PASSED ON TO A THIRD PARTY WITHOUT WRITTEN PERMISSION.  
OWNERSHIP AND COPYRIGHT OF CONEC GmbH  
DO NOT ALTER CAD DRAWING BY HAND

1 x b	Ä4263	02.04.12	HS
a	Original		
rev.	description	date	name

tolerance		scale:	2:1 (4:1)
	dim. in mm	material:	SEE NOTES
2007	date	name	
drawn	14.05.	Lehmenkühler	
appd.	15.05.	Mickenbecker	
norm	DIN 41617		
d-old			

**CONEC**<sup>®</sup>

title:	FEMALE CONNECTOR 13-31pos. / 2,5mm with solder termination	
dwg no:	AutoCAD 2006	DIN-A
	10K1A015	3
part no:	SEE TABLE	sh: 1/1